



QUICK-START FEATURES GUIDE

LET'S JUMP RIGHT IN

TABLE OF CONTENTS

INTRODUCTION — PAGE 3

TV BASICS — PAGES 4-6

- Remote Control Map
- Turning Your TV and Receiver On and Off
- Changing Channels: Remote and Program Guide
- Main Menu
- Exiting Menus
- My Subscribed Channels
- Predictive Search
- Remote Locator

PREFERENCES — PAGE 7

- Favorites List
- Parental Controls
- Audio, Closed-Captioning and SAP

WHOLE-HOME DVR — PAGES 8-11

- Overview
- How to Operate Your DVR
- Recording a TV Program
- Recording a Program or Series in the Future
- Watching a Recording From Any TV
- Watching a Recording Stored on Any Hopper
- Managing a Future Recording Conflict
- Starting a Movie in One Room and Finishing in Another
- Deleting a Recording

TV VIEWING STATUS — PAGE 12

- Viewing Options

PRIMETIME ANYTIME — PAGES 13-14

- Overview
- Enabling PrimeTime Anytime
- Disabling PrimeTime Anytime
- Enabling AutoHop

WI-FI BUILT IN AND DISH ANYWHERE — PAGES 15-16

- Benefits of Wi-Fi and Internet Connectivity
- DISH Anywhere
- Hopper Transfers App
- DISH Explorer App

ON DEMAND — PAGES 17-18

- Free On Demand Included With Your Subscription
- On Demand New-Release Titles
- 3D — Take Hopper to the 3rd Dimension
- Pay-Per-View
- Blockbuster @Home

APPS — PAGE 19

- Overview
- Game Finder
- Pandora

HOPPER EXTRAS — PAGES 20-21

- What's Hot
- SiriusXM
- Multi-Channel Recall
- SRS TruVolume
- Bluetooth Audio Streaming
- USB Digital OTA Tuner

HELP — PAGES 22-23

- Troubleshooting
- Check to See if Your Hopper is Connected
- Help App
- Customer Support

INTRODUCING

Hopper 
WITH **sling** 

Introducing the next generation of the Whole-Home HD DVR that brings full functionality — including pausing live TV — to every TV in your house. Hopper with Sling has the built-in ability to give you access to your live and recorded TV channels on your mobile devices, both at home and on the go.

With dozens of features you'll love, the Hopper with Sling will quickly become an invaluable addition to your household. This guide will introduce you to everything the Hopper can do to make your entertainment experience exceptional.



TV BASICS

REMOTE CONTROL MAP

» SAT MODE »

Correct mode for operating your DISH system.

TIP: Press and release the SAT mode button to ensure you are in the proper mode for controlling your receiver.

» MENU »

Access features and settings, including Parental Controls, My Account and more.

» RECALL »

Go back to the last four channels viewed.

» INFORMATION »

Display additional program information.

» COLOR KEYS »

Use the color keys to navigate the Guide and DVR.

TIP: Featured apps can be accessed by pressing the blue color key while watching live TV.

» (*)/FORMAT »

Change the shape of the picture on your TV screen to match the frame size of the program you are watching.

[VOLUME «

Control your TV's volume.

[GUIDE «

Display current and future TV program listings.

[CANCEL «

Go back one on-screen menu at a time.

Note: This may not be the previous screen you were viewing.

[VIEW LIVE TV «

Return to watching live TV. This will also exit all on-screen menus, even while watching DVR recordings.

[SEARCH «

Search for a program.

[DVR CONTROLS «

Refer to page 8 for details on how to operate your DVR.

[ON DEMAND «

Access On Demand titles, including new releases.

Note: Remote may vary.

TURNING YOUR TV AND RECEIVER ON AND OFF



- 1 Press the **red** TV Power button on your DISH remote to turn your TV on or off.



- 2 Press the **red** Power button on your DISH remote to turn your Hopper or Joey on or off.



MAIN MENU

The Main Menu lets you access all of your Hopper's features. Press Menu on your remote to access the Main Menu.



CHANGING CHANNELS: REMOTE AND PROGRAM GUIDE

There are three ways to change channels on your receiver:

- 1 Enter channel number using the remote keypad.
- 2 Use the Arrow/Channel buttons on your remote (up/down).
 - a. Press Guide on your remote.
 - b. Use the Arrow/Channel buttons on your remote to navigate the Program Guide.
 - c. Highlight and select the channel you want to watch.
- 3 Use the Program Guide.

EXITING MENUS

When you're in an on-screen menu, it's easy to return to the program you were watching — just press View Live TV on your remote.

MY SUBSCRIBED CHANNELS

Channels marked with an HD logo are available in high definition; those without the HD logo are available in standard definition. By default, your Program Guide displays your subscribed channels (My Channels). Press the **red** color key on your remote to see All Channels. Channel numbers that are not part of your subscription are displayed in red in your Program Guide.



Some channels like the SiriusXM collection (channel 99) are displayed in a collapsible channel range and are indicated by a (+) sign. Simply highlight the channel using the Arrow/Channel buttons on your remote, and then press Select on your remote to expand the channel collection.

PREDICTIVE SEARCH

Find what you want, fast. Hopper fast.

Predictive Search automatically begins displaying results as soon as you start typing, making it easy to locate programs on your Hopper or on live TV.

- 1 Press Search on your remote.
- 2 Enter a title, actor or keyword using the Arrow buttons on your remote. The number keys on the remote can be used like a cell phone to enter text.
- 3 Your Hopper and Joey will begin displaying results as soon as you start typing.



REMOTE LOCATOR

Locate lost remotes before you can say "Where's the remote?"

Never lose your remote control again! The Hopper's exclusive Remote Control Locator has you covered. Open the front panel of the receiver where you see the Pull tab. Press the Locate Remote button for three seconds. The remote will beep and light up. Press Select on your remote to turn off the feature.

On the Joey, the Locate Remote button is on the front of the unit.



» **NEED TO ORDER A REPLACEMENT REMOTE?**
LOG IN TO **MYDISH.COM** AND CLICK ON THE **ORDER FROM STORE** BUTTON.

PREFERENCES

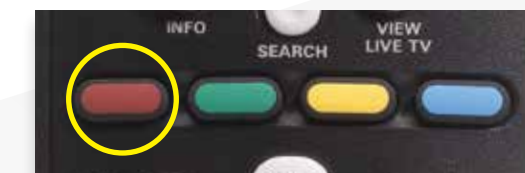
FAVORITES LIST



Everyone in your home can set up their own custom list of their favorite channels.

- 1 Press Guide on your remote.
- 2 Press the **red** color key on your remote to display the channel lists.
- 3 Highlight and select Edit Lists.
- 4 Select the list that you wish to edit and follow the on-screen instructions to add your favorite channels.

Use the **red** color key on your remote to access your Favorites list in the future while in the Guide.



PARENTAL CONTROLS

Use Parental Controls to restrict TV viewing according to ratings, channels, purchases or apps.

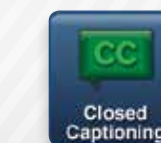
- 1 Press Menu on your remote and select Settings.
- 2 Select Parental Controls.
- 3 Follow the on-screen instructions to set up your preferences.



Parental Controls can also be copied to the Joeys connected to your Hopper. Select Copy Settings to establish identical Parental Controls on other TVs.

AUDIO, CLOSED-CAPTIONING AND SAP

- 1 Press Menu on your remote and select Settings.
- 2 Highlight and select Closed-Captioning or Audio for SAP.
- 3 Follow the on-screen instructions to enable Closed-Captioning, SAP and other audio preferences.



WHOLE-HOME DVR

OVERVIEW

Hopper with Sling and Joey provide a true Whole-Home HD DVR experience.

- » Watch, pause, record and rewind live TV on any TV in your house.
- » Record up to three shows at the same time from any TV.¹
- » Enable the PrimeTime Anytime feature and record up to six shows at once during primetime hours and play them back in any room.²
- » Access your DVR library from any room.
- » Start watching in one room, pause and continue watching in any other room.

HOW TO OPERATE YOUR DVR

-  Press DVR to view your recordings.
-  Press Record on your remote to record a program.
See page 9 for more details.
-  Press Pause on your remote if you need to step away from your TV.
-  To resume watching TV, press Play on your remote.
-  To stop a recording or playback, press Stop.
-  If you missed something and want to see it again, press Skip Back to go backward 10 seconds at a time.
-  Press Skip Forward to go forward 30 seconds at a time.
-  Press Back on your remote to rewind your program.
-  Press Forward on your remote to fast-forward your program
(only for DVR recordings or TV programs that have been paused).

¹ Available with TVs connected to a Hopper, which has three satellite tuners, allowing you to record up to three shows at one time.

² The PrimeTime Anytime feature records up to four local channels with one tuner; with the second and third tuner you can record two additional channels. PrimeTime Anytime feature is only available with ABC, CBS, FOX, and NBC. Feature must be enabled by customer and is subject to availability. Not available in all markets.

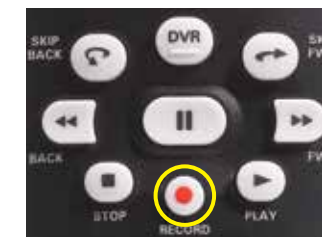


RECORDING A TV PROGRAM

Record a Program Now

- » If you are watching TV and want to begin recording that program, press Record on your DISH remote.

*The REC icon appears and recording will begin.
Press Record again to adjust end time.*



RECORDING A PROGRAM OR SERIES IN THE FUTURE

- 1 If you want to schedule a recording for a program that takes place in the future, press Guide.

The Program Guide appears.



Scroll through the Guide until the program you want to record is highlighted. Press Select.

A pop-up appears.



If you select Record Series Timer, the Event Timer screen will be displayed with your recording frequency options.

» FREQUENCY OPTIONS

New and Reruns:

Record all episodes.

Only New:

Record only new episodes.

Once:

Record the show only one time.



WHOLE-HOME DVR

WATCHING A RECORDING FROM ANY TV



If you would like to view a program that you previously recorded, press DVR on your remote.

The DVR screen will appear.

Scroll through and highlight the show you want to watch, and then press Select.

A menu above the DVR event will appear.

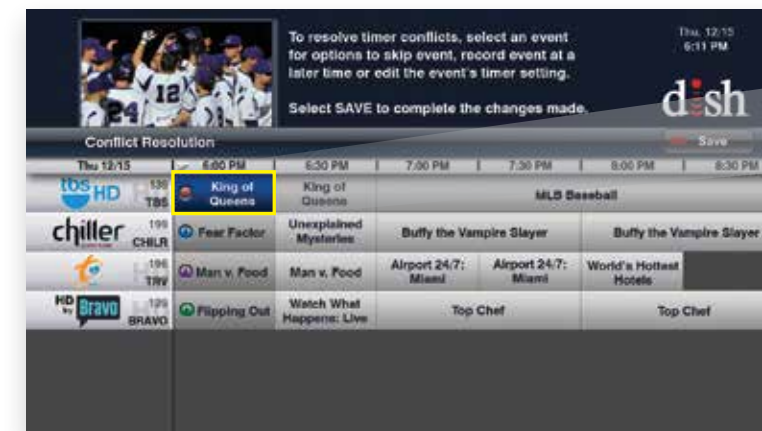
Select Start Over to play your recording from the beginning, or select Resume to continue watching where you left off.

WATCHING A RECORDING STORED ON ANY HOPPER

If you have more than one Hopper with Sling, your DVR content is accessible from both Hoppers; you can enjoy the same recorded programming from any room in the house.

To access a DVR library on another Hopper unit:

- 1 Press DVR on your remote.
- 2 Select the drop-down menu under the name of the Hopper unit you are currently using.
- 3 Select the DVR library for the desired Hopper to view the content you want to watch.



MANAGING A FUTURE RECORDING CONFLICT



The Conflict Resolution screen appears if you set a future recording timer when each of the Hopper's three tuners are already scheduled for recordings. The program marked with an 'X' is the program that will not record due to an unavailable tuner. Follow the on-screen instructions to cancel one of the future recordings; this will free up a tuner so you can record your program.

STARTING A MOVIE IN ONE ROOM AND FINISHING IN ANOTHER

You're always on the move in your home. Fortunately, so is the Hopper with Sling. With its Whole-Home DVR network, the Hopper makes it easier than ever to start watching a program in one room and resume in another.

- 1 Press the Pause button on your remote to pause the program.
- 2 Go to the next room and turn on your TV.
- 3 Press the **red** color key to display the TV Viewing Status screen.
- 4 Select the program you want to resume and it will continue from where you paused it.

Note: For instructions on how to start a DVR recording, go to page 10.

DELETING A RECORDING

- 1 Press DVR on your remote.
- 2 Select the program you want to delete.
- 3 Press the **blue** color key to delete.



» ACCIDENTALLY DELETE YOUR RECORDING? YOU HAVE 48 HOURS TO RESTORE IT! GO TO YOUR DVR FOLDER, CHOOSE **DELETED RECORDINGS** AND FOLLOW THE INSTRUCTIONS.

Note: You may not be able to restore deleted recordings if your DVR is full. Deleted PrimeTime Anytime recordings cannot be restored.

TV VIEWING STATUS

The Hopper with Sling has three separate tuners, so you can watch or record up to three live TV shows at the same time. The channels that are in use are displayed on your TV Viewing Status screen. If the TV Viewing Status screen appears, this means all tuners are in use.

Because PrimeTime Anytime¹ uses only one of the Hopper's three tuners to record four shows, two tuners are still available to you. That means you can record up to six shows during primetime hours.

VIEWING OPTIONS

If the TV Viewing Status screen appears, you have a number of options available.

- » **Join a Show or Recording in Progress**
Multiple TVs can display the same show simultaneously by sharing a tuner. Highlight the show you want to watch, and then press Select. You can then change the channel if you want to watch a different show.
- » **Cancel a Recording in Progress**
Highlight a recording in progress, and then press Select to join the program. Press Stop on your remote to stop the recording and change the channel to watch a different show.
- » **Watch a DVR or PrimeTime Anytime Recording**
Highlight the PrimeTime Anytime or DVR icon. Playing back these recordings does not use the Hopper's tuners, so other shows will not be interrupted.
- » **Watch On Demand**
Highlight the On Demand icon. Watching an On Demand movie does not use the Hopper's tuners, so other shows will not be interrupted.

To manually check on the status of the Hopper's tuners, press the **red** color key on your remote while watching TV.

¹ PrimeTime Anytime must be enabled by customer and is subject to availability. Feature may not be not available in all markets.



TV screen image may vary.



TV screen image may vary.



PRIMETIME ANYTIME™



OVERVIEW

Keep up with your favorite shows with PrimeTime Anytime.¹

Primetime won't come between you and your family time again. This exclusive feature of the Hopper lets you record every primetime show on ABC, CBS, FOX and NBC every night of the week. It only uses one of the Hopper's three tuners and lets you store recordings for up to eight days after they air. You can also save your recorded primetime shows for longer. PrimeTime Anytime is an optional feature that must be enabled on Hopper before recordings will begin (see page 14).

- » **RECORD SIX SHOWS DURING PRIMETIME HOURS: ABC, CBS, FOX AND NBC, PLUS TWO ADDITIONAL CHANNELS OF YOUR CHOOSING.**

¹ PrimeTime Anytime must be enabled by customer and is subject to availability. Feature is not available in all markets.

ENABLING PRIMETIME ANYTIME



Press the Menu button on your remote and select PrimeTime Anytime.



Select the Enable button to turn on the feature.



Customize your content by selecting which networks you want recorded on which days. Once your selections are made, select Done, and then select Save.



To view your shows, press the DVR button on your remote and select the PrimeTime Anytime folder.

Note: Keep your PrimeTime Anytime recordings as long as you want by saving them to your DVR. Select a recording and then select Save from the drop-down menu.

DISABLING PRIMETIME ANYTIME

Press the Menu button on the remote and then select Settings. Select DVR Defaults followed by PrimeTime Anytime. Now select Do Not Enable. Save your changes.

Note: You cannot disable PrimeTime Anytime during primetime hours once it has started recording. You must disable it 20 minutes before recording begins for the changes to take effect the same day.



ENABLING AUTOHOP

AutoHop is the patented technology from DISH that lets you skip ads automatically in select primetime shows.² Press the DVR button on your remote and select the PrimeTime Anytime icon. Titles that are accompanied by a red kangaroo icon are AutoHop-ready. Select a title, and a pop-up screen will ask if you wish to enable AutoHop for the event. Select Yes, and you will begin enjoying your show with no commercial interruptions. If you don't want to skip commercials, select No Thanks, and your show and commercials will play normally.

Note: AutoHop is only available on recordings the day after they are recorded.

Remember, the AutoHop feature will turn off once you have completed your viewing and must be re-enabled the next time you play back recorded content.

WI-FI BUILT IN & DISH ANYWHERE

BENEFITS OF WI-FI AND INTERNET CONNECTIVITY



Hopper with Sling comes with built-in Wi-Fi, so it can wirelessly connect to your broadband Internet service. This allows you to enjoy innovative features like DISH Anywhere, thousands of free movies and TV shows included with your subscription, and apps like Game Finder.

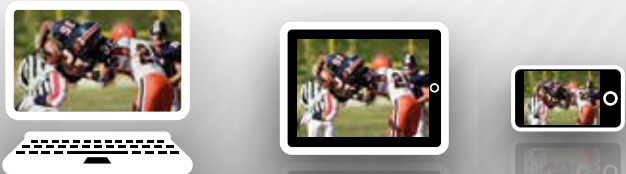
Your certified installer will connect your Hopper with Sling to your high-speed Internet service. To learn more, visit mydish.com/getconnected. For self-help tips, see page 22.

DISH ANYWHERE

DISH Anywhere lets you enjoy all of your channels and everything on your DVR anywhere that you have Internet access. Plus, you can watch thousands of On Demand TV shows and movies. DISH Anywhere is included with your service at no additional cost.

- » **Watch the Same Live TV and DVR Recordings on the Go**
Take your home TV programming with you wherever you go—including live and recorded content. With one click, you can watch your local news, live sports and favorite TV shows on your computer or mobile device.
- » **Schedule Your DVR Recordings From Anywhere**
DISH Anywhere is the easiest way to search for programs and schedule DVR recordings. Manage recordings of your favorite shows and series while you're away from home.
- » **Instantly Watch Thousands of Movies and TV Shows**
With DISH Anywhere, you can watch free On Demand content from the networks in your programming subscription. Log in to unlock programming from HBO, Starz, EPIX and more.¹

DISH Anywhere is available on your computer, tablet and smartphone.²



¹Some On Demand titles require a rental fee. Other titles are available for free based on your programming subscription, including select Starz and EPIX titles.
²Requires broadband Internet connection.

Getting Started

- 1 Create your DISH ID and password at **mydish.com**.
- 2 On your computer, log in to **dishanywhere.com** using your newly created DISH ID and password.
- 3 On your smartphone or tablet, download the free DISH Anywhere app from the Apple® App StoreSM or Google Play™ Store.
- 4 Launch the app and log in using your DISH ID and password.



HOPPER TRANSFERS APP



Introducing the innovative Hopper Transfers app. Now you can transfer your DVR recordings to your iPad and watch them wherever you are—even when you don't have an Internet connection.

- 1 Download the free Hopper Transfers app from the Apple App Store.
- 2 Launch the app, and follow the on-screen instructions to pair Hopper with your iPad. Be sure that your iPad is connected to the same network as Hopper with Sling.
- 3 Now select the DVR recording you wish to transfer to your iPad.



Some content will not be available, including PrimeTime Anytime recordings.

DISH EXPLORER APP



The DISH Explorer app provides an exciting new way to discover movies and shows. It displays thumbnails of the most popular programs on your iPad. To tune in or share with friends, touch the screen.

- 1 Download the free DISH Explorer app from the Apple App Store.
- 2 Launch the app, and follow the on-screen instructions to pair Hopper with your iPad. Be sure that your iPad is connected to the same network as your Hopper.
- 3 Now use your iPad to discover content and to control Hopper with Sling.



ON DEMAND

Watch your movies with stunning clarity and resolution equal to that of Blu-ray. Select from thousands of movie titles and watch them as often as you like within a 24- to 48-hour period.

FREE ON DEMAND INCLUDED WITH YOUR SUBSCRIPTION

Thousands of movies and TV shows from many of your favorite channels are available.

- 1 To access On Demand content, press On Demand on your remote.
- 2 Press the (*) button on your remote to see titles available as part of your subscription.

ON DEMAND NEW-RELEASE TITLES

Order New-Release On Demand Programs in HD and 1080p using your remote.

- 1 Press the On Demand button on your remote.
- 2 Follow the on-screen instructions to order.

Broadband Internet or phone line connection required.



3D — TAKE HOPPER TO THE 3RD DIMENSION

If your TV supports 3D display, you can experience movies like never before on your broadband-connected Hopper with Sling. Rent a variety of 3D movies on channels 1 and 501. For more information about 3D Video On Demand, visit **mydish.com/3D**.

- 1 Type in channel 1 or 501 to access 3D Video On Demand titles.
- 2 Choose a title with a 3D icon and follow the on-screen instructions to order.

Requires a 3D television.

PREPARE FOR MOBILE

When scheduling a recording, select **Prepare for Mobile** from the Event Timer screen. This will allow you to create a mobile version of your recording.



PAY-PER-VIEW

DISH puts you ringside at the biggest boxing, MMA and wrestling events every month.

Visit mydish.com/pay-per-view to see the latest Pay-Per-View programs available.

Order Pay-Per-View

By remote:

- 1 Press Guide on your remote and go to channels 455 and 499 (sports, events and adult entertainment).
- 2 Select your program and follow the on-screen instructions to order.

Online:

Visit mydish.com/pay-per-view

By phone:

Call 1-877-DISH PPV (347-4778)

Phone line or broadband Internet connection not required if ordering online or by phone.

» **NEED HELP CONNECTING?**
GO TO MYDISH.COM/GETCONNECTED
OR SEE PAGE 22 FOR SELF-HELP TIPS.

BLOCKBUSTER @HOME

DISH has joined with Blockbuster to offer the most extensive collection of movies, games, family programs and TV shows available. Your Blockbuster @Home subscription gives you unlimited access to thousands of movies at no additional charge. To view available movie titles, press Menu on your remote and select Blockbuster @Home.

To order or learn more, visit mydish.com/blockbuster.



*Your Hopper must be connected to broadband Internet to access the full collection of available titles.

APPS

OVERVIEW

With Hopper, TV is just the beginning.

Hopper with Sling brings you more than the best in TV, movies, music and entertainment. It also brings the best of the Web to your TV with news, sports, music, weather and game apps. You can even share your favorite shows and movies with friends on Twitter®. Press the Menu button on your remote and select Apps. Featured apps can be accessed by pressing the **blue** color key on your remote while watching TV.



GAME FINDER

While watching live TV, press the **blue** color key on your remote. This is a shortcut to featured apps like Game Finder. The DISH Game Finder lets you quickly locate any game available for viewing, based on your location and programming package. You can use Game Finder to select your favorite teams, get up-to-the-minute box scores of individual games, schedule recordings and set reminders for upcoming games on TV without missing a play.

PANDORA

You can also access your Pandora account through the Pandora app if your Hopper is connected to broadband Internet.



- 1 Press Menu on your remote, and then select Apps.
- 2 Select Pandora.
- 3 Follow the on-screen instructions.



» **YOUR HOPPER MUST BE CONNECTED TO BROADBAND INTERNET TO ACCESS ALL FEATURES.**

HOPPER EXTRAS

WHAT'S HOT



Never miss the hottest TV shows and sports. The What's Hot feature displays the top shows in your local or national geographic area, based on what other viewers are currently watching. You can also choose to set a DVR recording timer for these shows.

- 1 Press Menu on your remote.
- 2 Select What's Hot.



SRS TruVOLUME

SRS TruVolume eliminates volume fluctuations during commercials or when changing channels, so you can enjoy a more natural listening experience.

SRS TruVolume not available on all audio outputs/signals.

SIRIUSXM

Music fans will be happy to know that the Hopper delivers the same SiriusXM Satellite music channels you enjoy in your car right to your TV. Press Guide on your remote and go to channel 99 or type 99 on your remote followed by the number of your favorite music channel.

SiriusXM music channels are available with select programming packages.



MULTI-CHANNEL RECALL

Quickly navigate through the last four channels you viewed using the Recall button. Simply press the Recall button on your remote, and then select which channel you wish to view.

For additional options, press Menu on your remote, select Settings, then Guide Settings and then Format Guide.



BLUETOOTH® AUDIO STREAMING



Hopper with Sling is the first satellite receiver to offer wireless audio streaming. You can listen without disturbing anyone else in the room and never miss a play of the game. You can even stream SiriusXM satellite radio music stations (available with select programming packages).

Requires Bluetooth audio device, sold separately.

USB DIGITAL OTA TUNER

Purchase the optional USB Digital OTA Tuner, and watch and record free over-the-air local channels! The USB Digital OTA Tuner plugs into one of your Hopper's USB ports. You can then scan any channels your over-the-air antenna picks up to your Hopper TV Program Guide.* To purchase the USB Digital OTA Tuner, log in to your account at mydish.com and click Order From Store.

- 1 Connect the USB connection of your USB Digital OTA Tuner to one of your Hopper's USB ports.
- 2 Connect the coaxial port connection of your USB Digital OTA Tuner to your over-the-air antenna.

Note: Your system may be restarted

- 3 Press Menu on your remote. Select Settings, then Diagnostics and then Over the Air Locals. Select Scan to begin searching for channels.

*Over-the-air antenna not included with purchase. Additional purchase may be necessary. Must be connected to the Hopper.

HELP

TROUBLESHOOTING

75% of all technical problems can be solved by following these easy steps.

- » Make sure your DISH remote is in SAT mode.
- » Make sure your TV is on the correct input/channel.
- » Make sure you're on the correct Favorites List in the Guide.
- » Check for anything obstructing the signal to your satellite dish, such as tree branches, severe rain or snow build-up. If it is safe to do so, remove the obstruction or wait for the inclement weather to pass.
- » Reset your receiver by unplugging it from the wall for 10 seconds. Plug it back in and turn receiver on.

CHECK TO SEE IF YOUR HOPPER IS CONNECTED

Internet connection check

- 1 Press Menu on your remote.
- 2 Select Settings and then Network Setup.
- 3 Select Broadband, and your Home Network Connection status will be displayed.

Phone line connection check

- 1 Press Menu on your remote.
- 2 Select Settings and then Network Setup.
- 3 Select Phone Line, and the connection status will be displayed.

If your Hopper is connected, your Joeys are too.

» VISIT **MYDISH.COM/GETCONNECTED**
FOR ADDITIONAL INFORMATION.

HELP APP



Access helpful information about your Hopper with Sling or Joey by pressing Menu on your remote and then select Help.

CUSTOMER SUPPORT

If you have questions this booklet or the enclosed Guides don't answer, here are other helpful resources.

- » **mydish.com/support**
- » **mydish.com/manuals**
- » **mydish.com/chat**
- » **1-800-333-DISH (3474)**

Included with this guide are other helpful reference materials. Tuck them inside the folder so you can store all your important DISH information in one place.

- » DISH Channel Lineup Guide
- » Quick Reference Guides:
 - Getting Started With DISH
 - Getting Started With Your DVR
- » Important Product Information:
Safety Information, Warranty and
Residential Customer Agreement Pack

*For a complete User Manual,
visit **mydish.com/manuals**.*

All packages, programming, features, and functionality subject to change without notice. © 2012, DISH Network L.L.C. All rights reserved. App Store is a service mark of Apple Inc. Apple is a registered trademark of Apple Inc. Bluetooth is a registered trademark owned by Bluetooth SIG, Inc. Facebook is a registered trademark of Facebook Inc. Google Play is a trademark of Google Inc. HBO® and related channels and service marks are the property of Home Box Office, Inc. iPad is a registered trademark of Apple Inc. Pandora is a registered trademark of Pandora Media, Inc. SRS is a trademark of SRS Labs, Inc. STARZ and related channels and service marks are property of Starz Entertainment, LLC. Twitter is a registered trademark of Twitter, Inc.

dish[®]

DISH.COM