

# Remote Control User Guide



**dish**  
NETWORK®

**Quick Setup****1 Confirm Your Receiver Model then Select the Right Key**

Remote keys are included in this replacement remote kit.

Keys have two sides.  
Look on both sides to find  
the right key for your remote.



If your  
receiver  
looks like  
one of  
these...



DISH Player-DVR 942

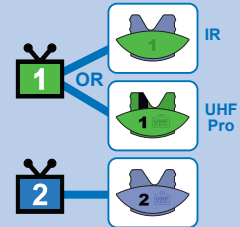


VIP222 &amp; VIP622 DVR



VIP722 DVR

Use the key that  
looks like this



If your  
receiver  
looks like  
one of  
these...



DISH 501 &amp; DISH 508



DISH 721

Use the key that  
looks like this



If your  
receiver  
looks like  
one of  
these...



DISH 411 &amp; VIP211

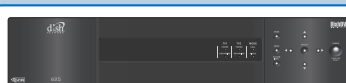


VIP211k

Use the key that  
looks like this



If your  
receiver  
looks like  
this...

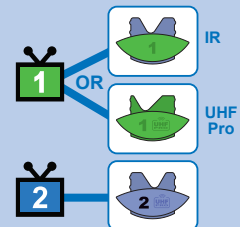


DISH Player-DVR 522

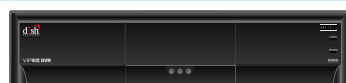


DISH Player-DVR 625

Use the key that  
looks like this



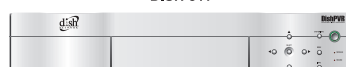
If your  
receiver  
looks like  
one of  
these...



VIP612 DVR



DISH 811



DISH Player-DVR 921

Use the key that  
looks like this

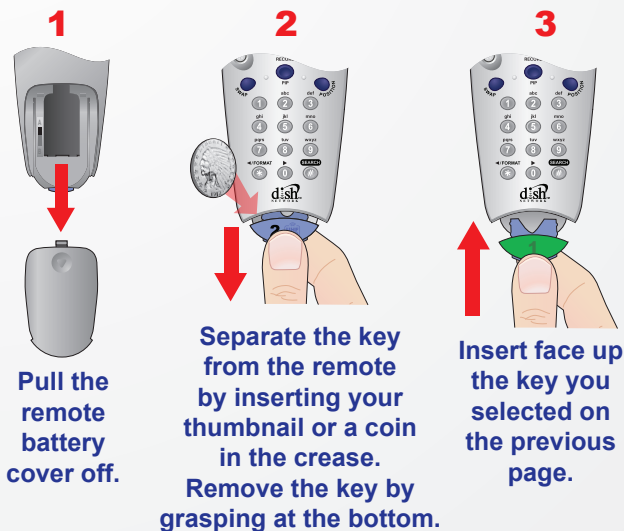


## Quick Setup

2

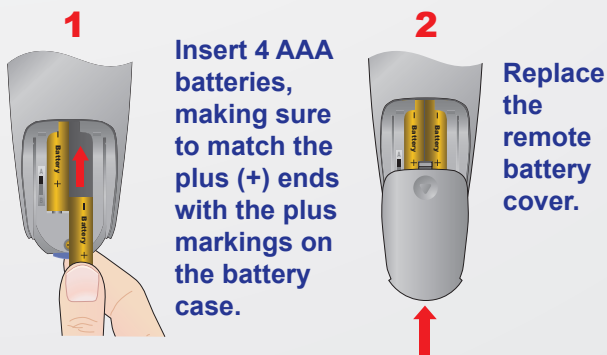
## Install Your Selected Key

**Note:** If you will be using the blue TV2 key that comes already installed in your remote, skip this step and proceed with the next step (*Insert the Batteries*).



3

## Insert the Batteries



C-2

## Quick Setup

4

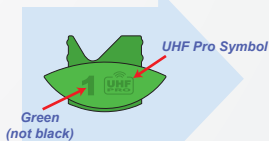
# Making the Remote Work With Your Receiver

1

If you installed one of these keys, continue with **step 2** on this page.



If you installed this key, go to **page 11** inside this guide.



2

If you installed a UHF key, make sure the UHF antenna is installed on the back of the receiver.

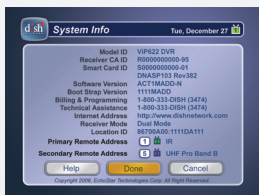


3

SYSTEM INFO

Turn your receiver and TV on, and press **SYSTEM INFO** on the front of the receiver.

4



Confirm that you see the **System Information** screen.

5



Press **RECORD** on your remote. The remote address will probably change on the screen.

6



Confirm that your remote operates your receiver by pressing remote buttons. If your remote has a blue number 2 key, you may need to go to your remote TV2 location to confirm your remote operates your receiver. If this is not working, go back to **step 5**.

C-3



**Quick Setup**

# Program the Remote to Control Your TV

**1**

**Turn your TV on.**

**2**

**Press & hold the TV Mode button until all Mode buttons light up.**

**3****POWER**

**Press POWER.**

**4**

**Press the UP ARROW on the remote repeatedly (about 1 press per second) until your TV turns off.**

**5**

**Press POUND.**

The TV Mode button will flash three times.

**6**

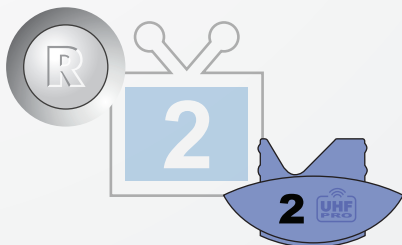
**Press the POWER button to turn the TV on and try other buttons to make sure the code works. If you want to try another code, start over from step 1.**

**Quick Setup**

# Programming the Recover Button for TV2 Operation

**For TV2 Remote Controls on  
DISH Player-DVR 522, 625, 942  
and ViP222, ViP622 DVR,  
ViP722 DVR Receivers**

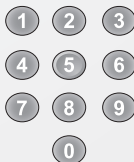
Programming your RECOVER button allows you to easily regain satellite programming if you accidentally change TV channels or inputs.

**1**

**Press & hold the  
TV Mode button  
until all Mode  
buttons light up.**

**2**

**Press  
STAR.**

**3**

**Enter the channel  
number you tune  
your TV to when you  
watch satellite  
programming.**

**4**

**Press  
POUND.**

**Use the RECOVER button as described in  
*If You Lose Your Picture* on the next page (C-6).**

**Quick Setup/Operation**

## Placing Your Remote in Limited Mode

Limited Mode locks out all the TV mode operations except for TV power, Mute, and Volume. This prevents you from accidentally tuning away from satellite programming.

**1**

**Press & hold the TV Mode button until all Mode buttons light up.**

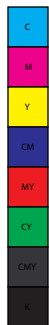
**2**

**Press the PAGE UP button.**

**3**

**Press POUND.**

To take the remote out of Limited Mode, use the PAGE DOWN button instead of the PAGE UP button in step 2.

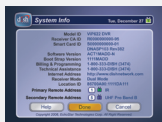


## If You Lose Your Picture (How to Use the RECOVER Button)

Use the RECOVER button to get back to watching satellite programming if you accidentally change channels or inputs on your TV.

**1**

**Press and hold RECOVER until all mode buttons light up.**

**2**

(Your screen may be different)

**If you see the System Information screen, proceed to step 4. Otherwise, continue to step 3.**

**3**

**Press RECOVER again & wait until the mode lights stop flashing. If you see the System Information screen, go to step 4. If not, repeat this step until you do.**

**4**

**Press SELECT to resume watching TV.**



## Operation

# Remote Operation SAT Mode

To use the features described in this section, make sure you are in SAT mode by pressing the SAT Mode button.  
**Note:** Some features may not be available depending on your receiver model.

### Volume & Mute Buttons

Control TV volume  
Programming required (see C-4)

### Receiver Power & TV Power

**Top button** turns the receiver on and off,  
**Bottom button** turns the TV on and off  
Programming required (see C-4)

Press this button for SAT Mode

### Page Buttons

Page up/down in menus

### Program Guide

Display current and future satellite program listings

### Arrows/Select Buttons

Channel up/down, navigate through menus/guides and select a desired option

### Browse

See what is on other channels while watching TV

### View Satellite Programming

Exit out of any menu/guide and go back to viewing live TV

### DISH

Explore interactive TV features

### Number Buttons

Enter a channel number, or select menu items

### Search

Search for a program

### Receiver Menu

Access receiver features and settings

### Themes

Search for programs using Themes

### Recall

Go back to last channel viewed

### Info

Display program info

### Digital Video Recorder (DVR) Buttons

Pause live TV and play or record programming

### Recover

Recovers satellite programming if your TV input or channel has changed

### Picture-In-Picture (PIP) Buttons

Watch two separate programs at once

### Format

Format the picture to the desired width to match the program you are viewing



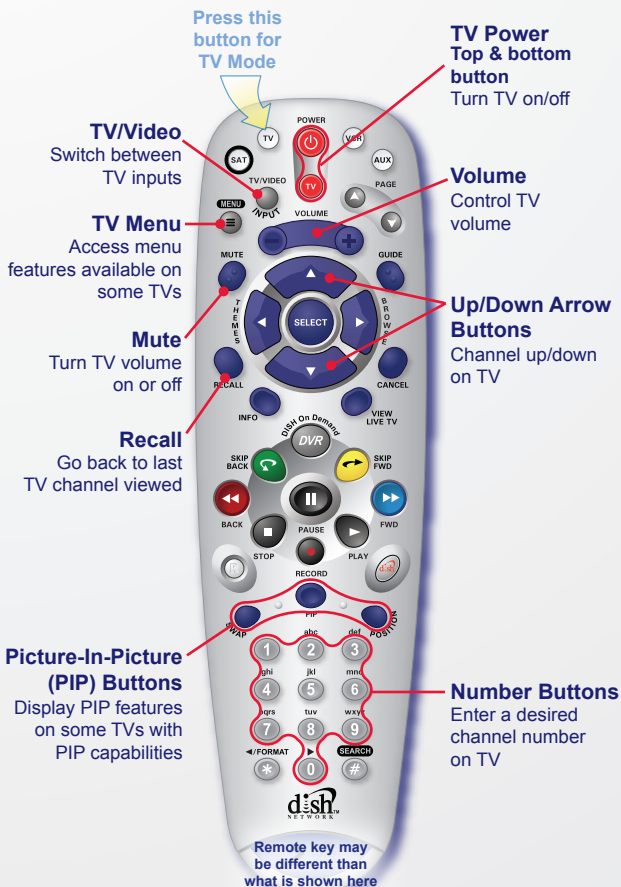
Remote key may be different than what is shown here

## Operation

# Remote Operation TV Mode

To use the features described in this section, make sure you are in TV mode by pressing the TV Mode button. Remote programming is required. See **C-4** for instructions.

TV



**Note:** Remote operation is different on DISH Network TVs. See your DISH Network TV User's Guide for proper operation.

## Operation

# Remote Operation VCR Mode

To use the features described in this section, make sure you are in VCR mode by pressing the VCR Mode button. You can use this mode to operate your DVD player instead of a VCR. Remote programming is required. See page 2 for instructions.

VCR

### VCR/DVD Power & TV Power

**Top button** turns the VCR/DVD player on and off,  
**Bottom button** turns the TV on and off

Press this button for VCR Mode

### TV/Video

Switch VCR between its TV & VCR mode

### Up/Down Arrow Buttons

Channel up/down on VCR

### Back

Rewind a videotape or reverse a DVD

### Pause

Pause a videotape or DVD

### FWD

Forward a videotape or DVD

### Stop

Stop playing or recording a videotape, stop playing a DVD

### Play

Play a videotape or DVD

### Record

Record on a videotape

### Number Buttons

Enter a desired channel number on VCR

Remote key may be different than what is shown here





# Notes:



## Table of Contents

### Quick Setup

Confirm Your Receiver Model then Select the Right Key.....	C-1
Install Your Selected Key.....	C-2
Insert the Batteries.....	C-2
Making the Remote Work with Your Receiver.....	C-3
Program the Remote to Control Your TV.....	C-4
Programming the Recover Button for TV2 Operation.....	C-5
Placing Your Remote in Limited Mode.....	C-6

### Operation

If You Lose Your Picture.....	C-6
SAT Mode.....	C-7
TV Mode.....	C-8
VCR Mode.....	C-9
Remote Control Overview.....	1
Using the Guide.....	1
Remote Control Modes.....	1
How the Remote Communicates.....	2
Programming for Other Equipment.....	2
Combination Equipment (for example, TV/VCR).....	2
Limited Mode.....	3
Programming Using Equipment Code Tables.....	3
Scanning for Equipment Codes.....	4
Switching Between TV and Amplifier Volume Control.....	6
Programming the Remote to Control a Second Receiver in AUX Mode.....	7
Reading Out the Remote Control Codes.....	8
Discrete Codes for Learning Remotes.....	9
Avoiding Remote Conflicts.....	9
Changing the Remote and Receiver Address.....	9
Changing the UHF Frequency Using the A/B Switch (DISH Player-DVR 942, ViP222, ViP622 DVR, and ViP722 DVR Only).....	10
Setting Up a TV1 UHF Pro Remote for the DISH Player-DVR 522 and 625 Only.....	11
Equipment Codes.....	13
Troubleshooting.....	21
Limited Warranty.....	23
Your Remote Control Codes.....	Inside Back Cover



## REMOTE CONTROL OVERVIEW

Use this full-function remote to control a variety of DISH Network receivers. Also, you can program the remote to control most of the popular brands of audio/video equipment like a TV, VCR, DVD player, or a second DISH Network satellite receiver. See *Programming for Other Equipment* on page 2.

**Note:** This remote control may have features not used by your receiver.

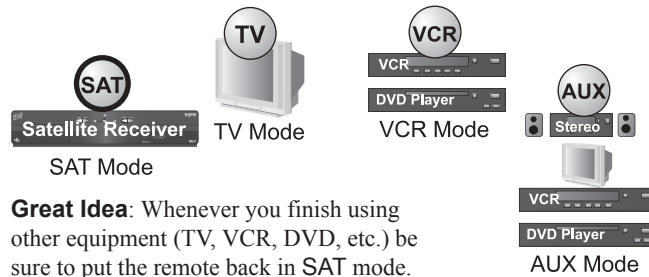
## USING THE GUIDE

This guide makes it easy to set up and use your remote control. By now you've noticed that the cover contains information on quick set up and remote control operation.

The rest of the guide contains in-depth information to help you get the most from your remote control, including controlling other equipment like TVs, VCRs, and DVD players.

## REMOTE CONTROL MODES

Use the remote control's mode buttons to set the remote to the correct mode for the equipment. Be sure to program the remote to control other equipment as described on page 2.



To change the mode, press the button for the equipment you want to control. The mode button lights for two seconds to show you've set the remote to that mode.

If you program the remote to control other equipment, refer to the following for remote control operation instructions:

- TVs, page C-8.
- VCRs and DVD players, page C-9.
- DISH Network satellite receivers, page C-7.
- Stereo equipment uses only these buttons: **SELECT** (to change inputs), **MUTE**, **VOLUME**, and **POWER**.

## HOW THE REMOTE COMMUNICATES

Depending on how the remote is set up, the remote control may use UHF radio signals, IR signals, or both to control the receiver. However, only IR signals are used to control other equipment.

- IR signals travel short distances (up to 40 feet), and cannot go through walls or other solid objects. Point the remote control directly at the equipment you want to control, with no objects to block the signal path.
- UHF signals travel long distances and can go through walls and other solid objects. Because these signals travel so far, the receiver may respond to signals from other nearby remote controls. To handle this problem, you may want to change the remote and receiver addresses (see page 9).
- If you're set up to use UHF, make sure that the UHF remote antenna is attached to the receiver's back panel REMOTE ANTENNA input so it can receive the UHF remote signals.

## PROGRAMMING FOR OTHER EQUIPMENT

Page C-4 shows you how to program the remote to control a TV. The following section uses a different method to program the remote to control a TV or other equipment (such as a VCR, DVD player, tuner, amplifier, or a second TV). You can program the remote by either following the instructions in *Programming Using Equipment Code Tables* on page 3, or the *Scanning for Equipment Codes* procedure described on page 4.

### COMBINATION EQUIPMENT (FOR EXAMPLE, TV/VCR)

When programming the remote to control combination equipment, such as a TV/VCR or a TV/DVD, program the remote control in one mode, and then repeat the procedure in the other mode. For example, to program the remote to control a TV/VCR using code 748, follow the instructions to program the remote to control the TV using code 748,

and then repeat the instructions for the VCR using the same code. Put the remote in TV mode to use the TV, or VCR mode to use the VCR.

### LIMITED MODE

You can program your remote control in Limited Mode to keep from accidentally changing the channel on your TV or VCR. When you use the remote to control your TV in Limited Mode, you will only be able to use the **POWER**, **MUTE**, and **VOLUME** buttons to control your TV. Also, when you use the remote to control your VCR in Limited Mode, you will only be able to use the **POWER** and **VCR** function buttons. The section *Programming Using the Equipment Code Tables* has a step that tells the remote control to go into Limited Mode. Also, a quick way to put the remote in Limited Mode is on page C-6.

**Note:** Limited Mode cannot be used with audio amplifiers.

### PROGRAMMING USING EQUIPMENT CODE TABLES

You can set up the remote to control other equipment using the equipment code tables listed on page 13 and the modes as shown on page 1. To control a receiver in **AUX** mode, see page 7.

Instructions	Additional Information
<b>1</b> Turn the equipment on.	Use the equipment's front panel buttons or its remote control.
<b>2</b> Find the brand name of the equipment in the tables starting on page 13.	If the brand isn't listed, see <i>Scanning for Equipment Codes</i> on page 4.
<b>3</b> Press and hold the mode button until all the other mode buttons light up, and then let go of the button. The mode button flashes.	For example, hold the TV mode button for a TV until all of the other mode buttons light. When you let go, TV will flash.
<b>4</b> <i>For AUX mode only.</i> Press 0 for a second TV, or 1 for a second VCR, or 2 for a tuner, or amplifier.	This step is for programming the kind of equipment that should be programmed in AUX mode. If you're not programming in AUX mode, skip to step 5.

**Instructions****Additional Information**

- |  |   |
|--|---|
| <b>5</b> Enter one of the three-digit equipment codes from the table using the number buttons.   | The three-digit equipment code should be for the brand name of your equipment that you found in step 2. |
| <b>6</b> If you want to program Limited Mode, press 1. If not, skip to step 7.   | See <i>Limited Mode</i> on page 3 for more information.   |
| <b>7</b> Press POUND (#).  | If you entered the code correctly, the mode button flashes three times.                                 |
| <b>8</b> Press POWER to turn off the equipment. If the equipment does not turn off, go to step 10.                                     | If the code works, the equipment should turn off.   |
| <b>9</b> Turn the equipment back on and try some other buttons to make sure they work. If the code works for other buttons, stop here. | For example, sometimes POWER works when other buttons don't.  |
| <b>10</b> If the code doesn't work, repeat steps 3 through 9 with another equipment code from the tables.                              | Try every code listed for your brand until one works for your equipment.                                |
| <b>11</b> If you can't find a code that works, try <i>Scanning for Equipment Codes</i> that follows.                                   |   |

**SCANNING FOR EQUIPMENT CODES****Instructions****Additional Information**

- |                                 |  |
|---------------------------------|--|
| <b>1</b> Turn the equipment on. | Use the equipment's front panel buttons or its remote control. |
|---------------------------------|--|

Instructions	Additional Information
<p><b>2</b> Press and hold the mode button until all the other mode buttons light up, and then let go of the button. The mode button flashes.</p>	<p>For example, hold the TV mode button for a TV until all of the other mode buttons light. When you let go, TV will flash.</p>
<p><b>3</b> <i>For AUX mode only.</i> Press 0 for a second TV, 1 for a second VCR, or 2 for a tuner, or amplifier. Then press the STAR (*) button.</p>	<p>This step is for programming the kind of equipment that should be programmed in AUX mode. If you're not programming in AUX mode, skip to step 4.</p>
<p><b>4</b> Press POWER.</p>	<p>This puts your remote in the scan mode.</p>
<p><b>5</b> Press either the UP or DOWN ARROW repeatedly until the equipment turns off.</p>	<p>As you press the UP or DOWN ARROW, the remote tries each code in the memory to see if it can turn off your equipment. When the equipment turns off, you have found a code that might work.  <b>Note:</b> The mode button for the equipment will flash rapidly eight times when you've scanned all the codes for that equipment.</p>
<p><b>6</b> Press POUND (#).</p>	<p>The mode button flashes three times if you have entered the code correctly. This stores the code you found.</p>
<p><b>7</b> Turn the equipment back on and try some other buttons to make sure they work.</p>	<p>Press POWER to turn the equipment back on. Try some other buttons to make sure they work. Sometimes POWER works when other buttons don't.</p>

**Instructions****Additional Information**

- |   |  |
|---|--|
| <p><b>8</b> If necessary, repeat this procedure until you've tried all the codes.</p> | <p>You may need to repeat the scan to find the best code for your equipment.</p> |
|---|--|

### ***SWITCHING BETWEEN TV AND AMPLIFIER VOLUME CONTROL***

When you set up the remote to control a TV, the **MUTE** and **VOLUME** buttons control the TV volume, even if your remote control is in **SAT** mode. However, if you want to use the **AUX** mode to control a tuner or amplifier that has a volume setting, you can set up the remote to control the equipment's volume instead of the TV volume while your remote control is in **SAT** mode. Follow the instructions in the left column. To change back to controlling the TV volume in **SAT** mode, follow the instructions in the right column.

**Control Amplifier Volume****Control TV Volume**

- |  |  |
|--|--|
| <p><b>1</b> Press and hold the <b>AUX</b> mode button for three seconds, and then let go of it. The <b>AUX</b> mode button will blink.</p> <p><b>2</b> Press the <b>POUND (#)</b> button.</p> <p><b>3</b> Press the plus (+) side of the <b>VOLUME</b> button.</p> <p><b>4</b> Press the <b>0</b> number button.</p> <p><b>5</b> Press the <b>POUND (#)</b> button.</p> <p>The <b>AUX</b> mode button flashes three times.</p> <p><b>MAKE SURE THE REMOTE CONTROLS THE AMPLIFIER'S VOLUME:</b></p> <p><b>6</b> Press the <b>SAT</b> mode button.</p> | <p><b>1</b> Press and hold the <b>TV</b> mode button for three seconds, and then let go of it. The <b>TV</b> mode button will blink.</p> <p><b>2</b> Press the <b>POUND (#)</b> button.</p> <p><b>3</b> Press the plus (+) side of the <b>VOLUME</b> button.</p> <p><b>4</b> Press the <b>0</b> number button.</p> <p><b>5</b> Press the <b>POUND (#)</b> button.</p> <p>The <b>TV</b> mode button flashes three times.</p> <p><b>MAKE SURE THE REMOTE CONTROLS THE TV'S VOLUME:</b></p> <p><b>6</b> Press the <b>SAT</b> mode button.</p> |
|--|--|

**Control Amplifier Volume**

- 7** Press the plus (+) and minus (-) sides of the **VOLUME** button.
- 8** The equipment's volume changes and the **AUX** mode button lights instead of the **TV** mode button.

**Control TV Volume**

- 7** Press the plus (+) and minus (-) sides of the **VOLUME** button.
- 8** The TV's volume changes and the **TV** mode button lights instead of the **AUX** mode button.

### ***PROGRAMMING THE REMOTE TO CONTROL A SECOND RECEIVER IN AUX MODE***

If you have another DISH Network satellite receiver installed, you can use this remote in **AUX** mode to control it along with your new receiver. When you program the remote to control the other receiver, the remote will send out IR and UHF (not UHF Pro) signals to the receiver. You can program the remote to control any other DISH Network satellite receiver, except for following:

- TV2 on DISH 322, DISH Player-DVR models 522, 625, and 942, ViP222, ViP622 DVR, and ViP722 DVR
- DishPlayer 7100/7200

- 1** Turn on the other receiver. Use the **SYS INFO** button on the front panel to open the **System Information** screen.

Write down the address shown: \_\_\_\_\_

- 2** Press and hold the **AUX** button until all the other mode buttons light up, and then let go of the button. The **AUX** button flashes.
- 3** Press the **3** button.
- 4** Use the **NUMBER PAD** to enter the address you wrote in step 1.
- 5** Press **POUND (#)**. The **AUX** button blinks three times.
- 6** Press **RECORD** to make sure the address in the remote matches the address on the receiver.

## READING OUT THE REMOTE CONTROL CODES

These instructions explain how to check the remote control code you put in the remote control when you set it up. Be sure to write them in the spaces provided on the inside back cover.

Instructions	Additional Information
<p><b>1</b> Press and hold the mode button for the equipment you want the remote to control. When all the other mode buttons light up, let go of the mode button—that mode button should now be flashing.</p>	<p>For example, hold the TV mode button for a TV until all of the other mode buttons light. When you let go, the TV mode light will flash.</p>
<p><b>2</b> Press the POUND (#) button <i>twice</i>. The mode button flashes the number for each digit of the equipment code, with a pause between the groups of flashes. A quick flash is for zero.</p> <p>For <b>AUX</b> mode, the first group of flashes tells you what the <b>AUX</b> mode controls, then the following flashes tell you each digit of the equipment code. A quick flash (zero) before the three-digit code is for a TV; one regular flash is for a VCR or DVD player; and two flashes is for a tuner or amplifier.</p> <p>For a satellite receiver programmed in <b>AUX</b> mode, the group of flashes tells you the address number.</p>	<p>For example, if the code is 570, the mode button flashes five times, pauses, flashes seven times, pauses, and flashes once quickly.</p> <p>For example, if the <b>TV</b> code is 570, the <b>AUX</b> mode button flashes once quickly, pauses, flashes five times, pauses, flashes seven times, pauses, and flashes once quickly.</p> <p>For example, if the <b>AUX</b> mode button is set to control a satellite receiver with address 5, the <b>AUX</b> mode button flashes five times.</p>



## DISCRETE CODES FOR LEARNING REMOTES

Remote control discrete On and Off IR commands are used by installers when programming macro commands into universal remotes. Using an On-only or Off-only command is more effective than a toggle On/Off command when trying to ensure the satellite receiver is reliably in one state or the other. To use discrete power commands, complete the following:

- 1 Program the DISH Network remote to the desired remote address (see *Changing the Remote and Receiver Address* below).
- 2 Hold the SAT mode button until all mode buttons light, then release.
- 3 Press POWER (not TV POWER).
- 4 Press VOLUME UP for discrete power on, or VOLUME DOWN for discrete power off.
- 5 Press any other button when done to end this procedure.

## AVOIDING REMOTE CONFLICTS

When your remote control uses UHF, you may experience interference from other nearby remotes. The instructions in this section describe how to avoid remote conflicts.

### CHANGING THE REMOTE AND RECEIVER ADDRESS

One quick way to avoid remote conflicts is by changing the address on your remote and receiver. If you notice that your receiver is changing channels or opening menus but you're not using the remote control, a quick change of address should fix the problem.

- 1 Press SYSTEM INFO on the receiver's front panel. The **System Information** screen displays and shows the **Remote Address**.

Write down the address shown: \_\_\_\_\_

- 2 Press and hold SAT on your remote control for about three seconds, until all of the mode buttons light up, and then let go of SAT.
- 3 Use the NUMBER PAD to enter any number between 1 and 16, but not the one you wrote in step 1.

- 4 Press POUND (#). If you entered the address correctly, SAT will flash three times. Write down the number you entered in the space provided on the inside back cover.
- 5 Press RECORD. Make sure the **Remote Address** you see on the **System Information** screen is the same as the one you entered in step 3. If it isn't, the remote cannot control the receiver. Press RECORD a second time.
- 6 Select **Done** to close the **System Information** screen.

### CHANGING THE UHF FREQUENCY USING THE A/B SWITCH (DISH PLAYER-DVR 942, ViP222, ViP622 DVR, AND ViP722 DVR ONLY)



All receiver models (*except* the DISH Player-DVR 942, ViP222, ViP622 DVR, and ViP722 DVR) must use switch position **A** or the remote will not control the receiver.

Your remote has a switch to change the UHF frequency that your remote control uses. It comes preset to the **A** position but you can change the setting to the **B** position to lessen the likelihood of any other UHF remote interfering with yours.

- 1 Remove the battery cover from the remote control.
- 2 Use a small screw driver or a paper clip to carefully change the setting.
- 3 Put the battery cover back on the remote control.
- 4 Use the SYS INFO button on the front panel to open the **System Information** screen.
- 5 Press RECORD on the remote control.
- 6 Make sure the remote address on the **System Information** screen shows the correct band information:

- Switch Position **A**—IR/UHF Pro Band **A**
- Switch Position **B**—IR/UHF Pro Band **B**



## SETTING UP A TV1 UHF PRO REMOTE FOR THE DISH PLAYER-DVR 522 AND 625 ONLY

Use these special instructions only if you are going to use the green 1 UHF Pro key to control the TV1 side of your DISH Player-DVR 522 or 625.

**If you have a DISH Player-DVR 522 or 625:**



**and want to use UHF Pro with TV1, use this key:**



When you are finished setting up the remote control, you'll be able to operate the TV1 side of your DISH Player-DVR 522 or 625 from long distances.

- 1** Make sure the key is installed as described on pages C-1 and C-2.
- 2** Make sure the UHF Antenna is attached to the REMOTE ANTENNA input on the back of the receiver.
- 3** Using the receiver's front panel buttons, press MENU. Select the following on-screen items in this sequence:
  - a. **System Setup.**
  - b. **Installation.**
  - c. **TV1 UHF Pro Setup.**
- 4** Select **Enable** from the **TV1 UHF Pro Setup** screen.
- 5** Select **System Info** to open the **System Information** screen.



- 6 Use the **ARROW** buttons to move the highlight to the TV1 remote address (the **1 Rem Addr** box as shown below). This is important—if you do not move the highlight, your remote will change the receiver's TV2 remote address (the **2 Rem Addr** box) and cause your Remote Control 1 to control the TV2 side of your receiver.



**Note:** Highlight the **1 Rem Addr** (the lighter area in the graphic above).

- 7 Press the **RECORD** button on the green TV1 remote control you are setting up. If you get a warning that tells you to pick another address, continue on to the next step. If no warning appears, go to step 12 of this procedure.
- 8 On the remote control, **press and hold the SAT** mode button for about three seconds, until all the mode buttons light up, and then let go of the SAT button. The SAT mode button will blink.
- 9 Use the number buttons to enter any number from 1 to 16, except for the address shown for **2** on your screen.  
Write down the number you entered: \_\_\_\_\_
- 10 Press the **POUND (#)** button. If you entered the address correctly, the SAT mode button will flash three times.
- 11 Make sure the **System Information** screen shows **UHF** and that this address matches the number you entered in step 9.
- 12 Select **Done** to close the **System Information** screen. If nothing happens, press **RECORD**, and then select **Done**.

## EQUIPMENT CODES

These tables contain the manufacturer codes for programming the remote to control your TV, a VCR, DVD player, or audio amplifier. Every attempt has been made to include all codes. If your equipment brand is not listed or if the codes do not work, the remote may not control your equipment. In some cases codes may operate some but not all buttons shown in this guide.

### TV CODES

**Programming in AUX mode:** Use these codes to program in TV mode; however, if programming in AUX mode, press 0 before entering the TV code.

<b>Abex</b> 230	<b>Dimensia</b> 645 650
<b>Action</b> 662	<b>DISH Network</b> 722, 742, 763
<b>Admiral</b> 521 605 675	<b>Dixi</b> 566 620
<b>Aiko</b> 727	<b>Dumont</b> 501 627 652
<b>Akai</b> 570 573	
<b>Alleron</b> 682	<b>Electrohome</b> 526 573 651 652 654
<b>A-Mark</b> 620	656 709 728
<b>Amtron</b> 657	<b>Emerson</b> 526 534 536 541 573 590
<b>Anam National</b> 509 541 620 651 657	627 636 642 648 652 654 655 657
698	658 662 682 683 692 696 699 720
<b>AOC</b> 505 506 519 520 573 620 627	816
652 653 654	<b>Envision</b> 506 573 652 654
<b>Apex</b> 743 744 745 757 814 815	<b>Fisher</b> 542 590 683
<b>Archer</b> 620	<b>Fortress</b> 573
<b>Audiovox</b> 620 657 662	<b>Fujitsu</b> 534 682 694
<b>Baycraft</b> 536	<b>Funai</b> 534 541 657 662 682 694
<b>Belcor</b> 652	<b>Futuretech</b> 541 657 694
<b>Bell &amp; Howell</b> 590 675 683	<b>GE</b> 508 509 543 544 630 645 646 650
<b>Bradford</b> 657	651 652 654 676 690 691 698 701
<b>Brockwood</b> 627 652	715 716 725 728 742 779 809 859
<b>Broksonic</b> 562 748 752	<b>General Electric</b> 627
<b>Candle</b> 506 523 525 536 627 652 654	<b>Gibraltar</b> 501 652
<b>Candle/Citizen</b> 573	<b>Goldstar</b> 505 523 526 545 546 566
<b>Capehart</b> 519 627	573 652 653 654 655 656 658 693
<b>Circuit City</b> 627	730
<b>Citizen</b> 506 516 523 524 525 526 590	<b>Granada</b> 627
652 654 657 658 680 727	<b>Grand</b> 627
<b>Colortyme</b> 573 627 652 654	<b>Grunpy</b> 657 682
<b>Concerto</b> 523 652 654	<b>Hallmark</b> 627 652 654
<b>Contec Cony</b> 662	<b>Harmon/Kardon</b> 561
<b>Contec/Cony</b> 541 655 657 726	<b>Harvard</b> 657
<b>Craig</b> 536 541 657 662 694	<b>Hinari</b> 534
<b>Crown</b> 526 536 657	<b>Hisense</b> 759
<b>Curtis Mathes</b> 506 516 526 573 590	<b>Hitachi</b> 523 526 548 549 553 554 555
641 645 650 652 654 658 680 683	585 597 626 636 638 643 648 652
703 708	654 655 702 718 726 786 788 789
<b>CXC</b> 541 657 662	790 791 792 801 802
<b>Cytron</b> 903 904	<b>IMA</b> 657
<b>Daewoo</b> 505 524 526 529 530 531	<b>Infinity</b> 566
573 630 652 653 654 658 684 698	<b>JBL</b> 566
719 727 816	<b>JC Penney</b> 505 506 516 525 526 543
<b>Daytron</b> 526 627 652 654 658	546 631 645 646 650 652 653 654
<b>Dell</b> 772 773 774	658 676 680 690 691 701 725 726

**TV CODES (CONTINUED)**

**Jensen** 556 573 652 654  
**JVC** 508 557 559 642 649 655 676  
 726 735 736 737 812 817  
**Kawasho** 548 561 573 652 654  
**Kenwood** 506 573 652 654 656  
**Kloss** 561 610  
**Kloss Novabeam** 657 698 723 724  
**KTV** 526 541 573 657 658 662 696  
**LG** 653 766  
**Lloyds** 627  
**Lloytron** 526  
**Loewe** 566  
**Logik** 675  
**Luxman** 523 652 654  
**LXI** 563 566 590 595 617 631 635 645  
 646 650 654 683 691 701 725  
**M. Wards** 500 505 506 534 543 567  
 568  
**Magnasonic** 573  
**Magnavox** 506 520 525 536 566 567  
 568 573 610 652 654 656 723 724  
 729 762 818 887 888  
**Majestic** 675  
**Marantz** 506 566 573 652 654  
**Megatron** 627 654  
**Memorex** 590 627 653 654 675 683  
 720  
**MGA** 504 505 506 542 571 573 627  
 652 653 654 656 728  
**Midland** 501 646 658 676 725 730  
**Mitsubishi** 504 505 542 570 571 572  
 573 597 623 627 652 653 654 656  
 705 728 787 799 804  
**Mitsui** 769  
**Montgomery Ward** 675  
**Motorola** 521 605 651  
**MTC** 505 506 516 523 573 627 652  
 653 654 680  
**Multitech** 657  
**NAD** 502 617 627 631 635 637 654  
**National** 509  
**NEC** 505 506 507 517 523 573 627  
 651 652 653 654 731 732  
**Nikkai** 612  
**Nikko** 654 727  
**Normandic** 717  
**Novabeam** 561  
**NTC** 727  
**Nyon** 701  
**Olevia** 766 773  
**Onwa** 541 657  
**Optimus** 637  
**Optonica** 521 605 607  
**Orion** 694  
**Osaki** 612  
**Panasonic** 508 509 512 566 644 651  
 662 676 685 689 698 700 716 734  
 761 765 780 784 811 819 820 821  
 822 823 867 868 869 870 871 872  
 873 874 875 876 877 878 879 880  
 881 882 883 884 885 886 889 890  
 900  
**Philco** 505 506 525 536 568 573 610  
 651 652 653 654 655 656 723 724  
 729  
**Philips** 525 566 651 652 655 656 690  
 723 724 729 770 782 824 825 826  
 827 828 891 892 893 894  
**Philips Magnavox** 782 826 827 828  
 829  
**Pilot** 652 658  
**Pioneer** 502 548 576 636 637 648  
 652 654 708  
**Portland** 505 526 573 652 653 654  
 658 727  
**Price Club** 680  
**Prism** 676  
**Proscan** 645 646 650 691 725 742  
 857  
**Proton** 513 519 526 536 585 627 652  
 654 655  
**Pro View** 902  
**Pulsar** 501 652  
**Quasar** 508 509 651 676 698 700 860  
 861 862 895 896  
**Radio Shack** 526 541 590 607 612  
 645 662 683 698  
**Radio Shack/Realistic** 590 607 650  
 652 654 655 657 658 683 730  
**RCA** 503 505 548 630 633 634 636  
 641 645 646 648 650 651 652 653  
 654 656 691 698 701 708 715 716  
 725 742 749 763 776 805 830 831  
 832 863 864  
**Realistic** 590 645 683  
**Runco** 501  
**Sampo** 506 519 652 654 658 698 730  
 746  
**Samsung** 505 506 516 523 526 566  
 573 612 627 647 652 653 654 655  
 656 658 680 704 717 730 738 755  
 833 858 897  
**Samwon** 620  
**Sansui** 754 834  
**Sanyo** 542 590 652 683  
**SBR** 566  
**Schneider** 566  
**Scotch** 654  
**Scott** 526 534 541 600 652 654 655  
 657 662 682 696 701  
**Sears** 523 534 542 563 590 595 601  
 604 617 627 631 635 645 646 650  
 652 654 656 682 683 688 691 703  
 725 726

## TV CODES (CONTINUED)

<b>Seimitsu</b> 627	<b>Teknika</b> 504 505 512 516 523 524
<b>Sharp</b> 521 526 585 605 607 628 629	525 526 534 536 541 573 644 652
652 654 655 658 739 740 741 777	653 654 655 657 658 662 675 680
794 803 835 836 898	682 685 726 727
<b>Shogun</b> 652	<b>Tera</b> 513
<b>Signature</b> 675	<b>Thomas</b> 627
<b>Silver</b> 573	<b>Thompson</b> 709
<b>Simpson</b> 525	<b>TMK</b> 523 573 627 652 654
<b>Solavox</b> 612	<b>Toshiba</b> 516 590 617 631 635 680
<b>Sony</b> 500 578 640 690 758 781 783	683 688 750 771 785 793 847 848
795 796 797 798 806 807 808 810	849 850 851 852 853 854 855 856
837 838 839 840 841 842 843 844	865 866
845	<b>Totevision</b> 526 658
<b>Soundesign</b> 525 536 541 627 652	<b>Toyomenko</b> 627
654 657 682	<b>Universal</b> 543 690
<b>Spectricon</b> 520 620	<b>Vector Research</b> 506
<b>Squareview</b> 694	<b>Victor</b> 557
<b>SSS</b> 505 541 573 652 657	<b>Video Concepts</b> 570
<b>Starlite</b> 657	<b>Vidtech</b> 505 573 627 652 653 654
<b>Supra</b> 523	<b>Viewsonic</b> 760
<b>SVA</b> 901 905	<b>Wards</b> 536 573 607 645 650 652 653
<b>Sylvania</b> 506 525 536 566 568 569	654 656 675 682 690 715 723 724
573 600 610 652 654 656 723 724	729
729 733 756 764	<b>White Westinghouse</b> 816
<b>Symphonic</b> 632 657 662 692 694	<b>Yamaha</b> 505 506 573 652 653 654
846	656
<b>Tandy</b> 521 605	<b>York</b> 627
<b>Tatung</b> 509 651 698	<b>Zenith</b> 501 520 639 652 675 693 775
<b>Technics</b> 508 676	778 813 899
<b>Techwood</b> 523 573 652 654 676	<b>Zonda</b> 620

## VCR CODES

**Programming in AUX mode:** Use these codes to program in VCR mode; if programming in AUX mode, press 1 before entering the VCR code.

<b>Adventura</b> 588	<b>Curtis Mathes</b> 554 592 594 605 607
<b>Aiwa</b> 588 622 623	675 678 679
<b>Akai</b> 513 515 516 517 518 568 682	<b>Cybernex</b> 675
<b>American High</b> 678	<b>Daewoo</b> 534 547 559 588
<b>Amstrad</b> 588	<b>DBX</b> 592 600
<b>ASA</b> 556	<b>Dimensia</b> 607
<b>Asha</b> 675	<b>Dumont</b> 549
<b>Audio Dynamics</b> 592 600	<b>Dynatech</b> 588
<b>Audiovox</b> 676	<b>Electrohome</b> 512 676
<b>Beaumarck</b> 675	<b>Electroponic</b> 676
<b>Bell &amp; Howell</b> 581	<b>Emerson</b> 505 508 509 511 512 518
<b>Broksonic</b> 559	534 559 568 588 590 618 676 678
<b>Calix</b> 676	<b>Finlandia</b> 549
<b>Candle</b> 534 594 675 676	<b>Finlux</b> 549 556 588
<b>Canon</b> 554 678 679	<b>Fisher</b> 549 581 584 588 610
<b>Citizen</b> 534 591 592 594 675 676	<b>Fuji</b> 678
<b>Colortyme</b> 592	<b>Funai</b> 588
<b>Craig</b> 591 675 676	<b>Garrard</b> 588

**VCR CODES (CONTINUED)**

**GE** 551 552 554 572 591 605 607 675  
 678 679  
**Go Video** 557 558 620  
**Goldstar** 592 594 676  
**Goodmans** 585  
**Gradiente** 588  
**Granada** 549 581  
**Grundig** 556  
**Harley Davidson** 588  
**Harman Kardon** 592  
**Harmon/Kardon** 568 592  
**Headquarter** 581  
**Hitachi** 536 538 539 540 588 595 597  
 682  
**Instant Replay** 678  
**ITT** 518  
**JC Penney** 554 581 591 592 594 595  
 600 675 676 678 679  
**JCL** 678  
**Jensen** 595 682  
**JVC** 561 562 563 581 592 594 600  
 682  
**Kenwood** 562 581 592 594 600 682  
**Kodak** 676 678  
**LG** 676  
**Luxor** 518  
**Lloyd's** 588  
**LXI** 676  
**M. Wards** 512 554 585 590 591  
**Maganvox** 797  
**Magnavox** 527 533 554 556 678 679  
 797 798  
**Magnin** 676  
**Marantz** 554 556 581 585 592 594  
 600 678  
**Marta** 676  
**Matsushita** 678  
**MEI** 554 678  
**Memorex** 533 549 554 566 581 585  
 588 675 676 678  
**MGA** 512 567 568  
**MGN Technology** 675  
**Midland** 579  
**Minolta** 595  
**Mitsubishi** 512 562 567 568 570 571  
 595  
**Motorola** 678  
**MTC** 544 588 675  
**Multitech** 579 588 675  
**Mutitech** 591  
**NEC** 562 581 592 594 600 682  
**Nikko** 676  
**Noblex** 675  
**Olympus** 678  
**Optimus** 676  
**Optonica** 585  
**Panasonic** 523 554 598 614 628 633  
 678 679 777 780 781 782 783 784  
 785 786 787 788 789 790 791 792  
 793 794 795 796 799 808 809 810  
**Pentax** 592 595  
**Pentax Research** 594  
**Perdio** 588  
**Philco** 554 678 679  
**Philips** 554 556 585 678 801 802 803  
 804  
**Pilot** 676  
**Pioneer** 562 574 575 576 600  
**Proscan** 605 607  
**Pulsar** 533  
**Quarter** 581  
**Quartz** 581  
**Quasar** 554 678 679 770 771 772 805  
 806  
**Radio Shack** 512 607 610 676  
**Radio Shack/Realistic** 581 584 588  
 675 676 678 679  
**Radix** 676  
**Randex** 676  
**RCA** 518 525 527 528 591 595 605  
 607 615 631 649 675 678 773 774  
 775  
**Realistic** 534 549 554 581 584 585  
 588 675 676 678 679  
**Ricoh** 502  
**Runco** 533  
**Salora** 567 581  
**Samsung** 515 517 534 579 591 675  
 755 807  
**Sanky** 533  
**Sansui** 544 562 600 682  
**Sanyo** 549 581 583 675  
**SBR** 556  
**Scott** 508 534 559 590  
**Sears** 549 581 584 595 610 676 678  
**Sharp** 512 585 595 607 625  
**Shintom** 595  
**Shogun** 675  
**Singer** 678  
**Sony** 500 501 502 504 768 778  
**STS** 678  
**Sylvania** 554 556 567 588 678 679  
 756  
**Symphonic** 588 594  
**Tandy** 581 588  
**Tashiko** 676  
**Tatung** 594 682  
**Teac** 588 594 682  
**Technics** 554 633 678  
**Teknika** 554 588 676 678  
**TMK** 675  
**Toshiba** 534 535 567 584 590 769  
 776



## VCR CODES (CONTINUED)

**Totevision** 591 675 676  
**Unitech** 675  
**Vector Research** 534 592 600  
**Victor** 561 562 600  
**Video Concepts** 534 568 592 600

**Videosonic** 591 675  
**Wards** 534 588 595 675 676 678  
**XR-1000** 588 678  
**Yamaha** 581 592 594 600 682  
**Zenith** 500 501 533 779

## DVD PLAYER CODES

**Programming in AUX mode:** Use these codes to program in VCR mode; if programming in AUX mode, press 1 before entering the DVD Player code.

**Aiwa** 634 694  
**Alpine** 653  
**Apex** 654 655 744 757 835 839  
**Archos** 885  
**BOSE** 758 811  
**Broksonic** 656 752  
**Clarion** 696  
**Classic** 695  
**CyberHome** 833  
**Cytron** 904  
**Daewoo** 657 859  
**Denon** 697 699 700  
**EchoStar** 722  
**Emerson** 658  
**Fisher** 659  
**Funai** 658  
**GE** 702 703  
**Go Video** 692 693 822  
**GPX** 704  
**Hitachi** 660 705 706 707 740 823 860  
     668  
**JVC** 689 711 850 861 862 863  
**Konka** 637 638 753  
**Koss** 745  
**Magnavox** 661  
**Memorex** 709  
**Mintek** 710  
**Mitsubishi** 767 867  
**Norcent** 711

**Oritron** 723  
**Panasonic** 639 663 699 714 715 716  
     734 765 813 840 841 855 856 868  
     869 870 871 872 873 882  
**Philips** 766 874  
**Pioneer** 665 719 812 876 877 878  
     879 880  
**Proscan** 720  
**Qwestar** 723  
**RCA** 666 690 749 816 842 854  
**Sampo** 724  
**Samsung** 652 667 668 691 740 741  
     820 821 844 845 866 875 881 705  
**Sansui** 725 754  
**Sanyo** 643  
**Sharp** 669 727 865  
**Sony** 617 645 670 671 729 730 731  
     768 817 818 830 831 832 836 837  
     838 843 847 848 849 851 852 853  
     857 858 864 883 884  
**Sylvania** 658 764 829  
**Teac** 732  
**Technics** 733  
**Techwood** 664  
**Toshiba** 616 646 672 735 736 814  
     815 819 825 826 827 828 834 846  
**Yamaha** 737 739  
**Zenith** 673 824

## TUNER/AMPLIFIER CODES

**Programming in AUX mode:** Press 2 before entering the tuner/amplifier code.

**Aiwa** 636 641 656 687 718 720 724  
     725 726  
**BOSE** 761 780  
**Carver** 653  
**Citizen** 709  
**Denon** 647 674 759 760 762 807 809  
     814 835

**Fisher** 653  
**GE** 711  
**Goldstar** 677 690  
**Harman Kardon** 640 751  
**Harmon/Kardon** 672  
**Hitachi** 717  
**JBL** 640

### TUNER/AMPLIFIER CODES (CONTINUED)

**JVC** 637 683 703 725 786 827

**Kenwood** 676 691 726 728 774 795  
828 829 830 831 832 840 842

**Magnavox** 654 705

**Marantz** 651 764

**Nakamichi** 671

**NEC** 716

**Onkyo** 642 660 662 678 785 788 790  
791 792 796 801

**Optimus** 648 664

**Panasonic** 643 644 652 783 797 798  
799 808 810 815 816 817 818 819  
820 821 822 824 825 826 833 836  
837 838 839

**Pioneer** 658 667 668 679 702 767

770 772 779 802 806 844

**Proton** 654 705

**Quasar** 652

**RCA** 635 638 704 727

**Sharp** 712 713 714 715

**Sherwood** 646 670

**Sony** 639 645 687 728 729 730 765

766 769 771 773 775 776 777 778

781 782 784 787 789 793 794 803

811 812 813

**Soundmatters** 763

**Teac** 684

**Technic** 652

**Technics** 643 644 652 768 804 805  
843

**Toshiba** 710

**Victor** 703

**Yamaha** 663 730 731 732 733 823  
834 841

### TV/VCR COMBO CODES

**Programming for combination equipment:** Program the remote control in TV mode using the TV code and then in VCR mode using the VCR code.

	TV Code	VCR Code
<b>Magnavox</b>	887	797
	888	798
<b>Philips</b>	891	801
	892	802
	893	803
	894	804
<b>Quasar</b>	860	770
	861	771
	862	772
	895	805
	896	806
<b>RCA</b>	863	773
	864	774
<b>Samsung</b>	755	755
	897	807
<b>Sylvania</b>	756	756

### TV/DVD COMBO CODES

**Programming for combination equipment:** Program the remote control in TV mode using the TV code and then in VCR mode (or AUX—press 1 before entering the DVD code) using the DVD code.

	TV Code	DVD Code
<b>Apex</b>	757	757
<b>Broksonic</b>	752	752
<b>Cytron</b>	904	904
<b>Panasonic</b>	734	734
	765	765
<b>RCA</b>	749	749
<b>Sansui</b>	754	754
<b>Sylvania</b>	764	764
<b>Toshiba</b>	865	814
	866	815

### TV/DVD/VCR COMBO CODES

**Programming for combination equipment:** Program the remote control in TV mode using the TV code, then in VCR mode using the VCR code, and then DVD in AUX mode (press 1 before entering the DVD code) using the DVD code.

	TV Code	DVD Code	VCR Code
<b>Panasonic</b>	900	882	810

### TV/VCR/TUNER COMBO CODES

**Programming for combination equipment:** Program the remote control in TV mode using the TV code, then in VCR mode using the VCR code, and then tuner in AUX mode (press 2 before entering the tuner code) using the tuner code.

	TV Code	VCR Code	Tuner Code
<b>Panasonic</b>	867	796	797
	868	799	798
	869	808	799
	870	780	839
	871	781	838
	872	782	837

*Table continues on next page*




**TV/VCR/TUNER COMBO CODES (CONTINUED)**

	TV Code	VCR Code	Tuner Code
<b>Panasonic</b>	873	783	836
	874	784	833
	875	785	826
	876	786	825
	877	787	824
	878	788	822
	879	789	821
	880	790	820
	881	791	819
	882	792	818
	883	793	817
	884	794	816
	885	795	815
	889	809	808



## TROUBLESHOOTING

What's Happening	What's Wrong	What You Can Do
While performing a remote control procedure, the remote control stops working.	If you don't press a button for 20 seconds in a programming sequence, the remote shuts off its programming function.	Start over again.
You cannot find the key(s) shown on page C-1.	The keys have two sides.	Turn the keys over until you find the correct key.
When you press a button on the remote control, the equipment doesn't do what you expect.	<ul style="list-style-type: none"> <li>The remote may not be in the mode for the equipment you want to control.</li> <li>The remote control needs to be pointed right at the TV (or other equipment).</li> <li>The remote control may be missing batteries, the batteries in the remote may be inserted the wrong way, or maybe the batteries are weak or dead.</li> <li>The remote isn't set up to control the equipment.</li> </ul>	<ul style="list-style-type: none"> <li>Press the correct mode button to set the remote to the mode for the equipment you want to control.</li> <li>The remote control uses IR signals to control all equipment except for the receiver (when using UHF). IR signals travel <i>only</i> 40 feet or less, and <i>can't</i> go through walls or other solid objects. You <i>must</i> point the remote control right at the equipment, with <i>no</i> objects to block the signal path.</li> <li>If the batteries are missing or dead, put fresh AAA-size batteries in. If the remote has fresh batteries, check whether you put them in the right way. If you didn't, take them out and put them in the right way.</li> <li>Make sure you set up the remote to control all the equipment you want to use. See <i>Program the Remote to Control Your TV</i> on page C-4 and <i>Programming for Other Equipment</i> on page 2.</li> </ul>
The receiver does things even though you didn't press any remote control buttons.	UHF signals from a neighbor's remote may be controlling your receiver.	See <i>Avoiding Remote Conflicts</i> on page 9 for instructions to correct this problem.
Your picture is snowy (or blue or black).	You have accidentally changed the channel on your TV.	Make sure your TV (and VCR, if connected) is tuned to the correct channel. Also try using the RECOVER button as described on page C-6.

What's Happening	What's Wrong	What You Can Do
Your remote control isn't working	<ul style="list-style-type: none"> <li>The remote control is in the wrong mode.</li> <li>You might be using the wrong remote control (TV1 or TV2).</li> <li>Your batteries are worn out.</li> <li>The remote control's K A/B switch is in the wrong position</li> </ul>	<ul style="list-style-type: none"> <li>Make sure the remote control is in the correct mode. For example, if you want to use the satellite receiver, put the remote control in SAT mode (see <i>Remote Control Modes</i> on page 1).</li> <li>Make sure you are using the correct remote control (TV1 or TV2) for your locations (multi-room receivers only).</li> <li>Change the batteries as described on page C-2.</li> <li>Check the A/B switch setting as described on page 10.</li> </ul> <p> For all receivers (<i>except</i> for the DISH Player-DVR 942, ViP222, ViP622 DVR, and ViP722 DVR): leave the A/B switch in the A position.</p>
When you press the remote control MUTE or VOLUME button, nothing happens.	<ul style="list-style-type: none"> <li>The remote control may not be set up.</li> <li>Maybe you're trying to control TV volume but you set up the remote to control a tuner or amplifier in AUX mode.</li> </ul>	<ul style="list-style-type: none"> <li>See <i>Programming the Remote to Control Your TV</i> on page C-4 and <i>Programming for Other Equipment</i> on page 2.</li> <li>Set up the remote to control <i>either</i> TV volume <i>or</i> tuner/amplifier volume, whichever you want. See page 6.</li> </ul>
Your UHF Pro remote control does not work well from far away.	You may be experiencing interference from objects near your receiver antenna.	<ul style="list-style-type: none"> <li>Make sure the UHF antenna is connected to the receiver and not touching anything else.</li> <li>Vary the tilt angle of the receiver's UHF antenna. Locate the UHF antenna tip away from other electronics equipment or metal surfaces, even if separated by wooden shelving.</li> <li>Move the receiver to different locations. For best results, place the receiver as high as possible, above all other equipment in your entertainment center.</li> <li>Place the UHF antenna outside the entertainment center by using a coaxial cable to connect it to the receiver.</li> <li>Move any nearby off-air antenna away from the UHF remote antenna. Do not place an off-air antenna on your receiver.</li> </ul>
Your PIP (Picture-In-Picture) button isn't working.	<ul style="list-style-type: none"> <li>Your receiver doesn't use PIP.</li> <li>Your receiver isn't in Single Mode.</li> </ul>	<ul style="list-style-type: none"> <li>Upgrade to a receiver with this feature.</li> <li>Press the MODE button on the front panel (if available).</li> </ul>

## LIMITED WARRANTY



This *Limited Warranty* is a legal document. Keep it in a safe place. Remember to keep your *Sales Receipt* for warranty service. We will consider any items you return without a copy of the *Proof of Purchase* to be out of warranty.

This warranty extends *only* to the original user (“you,” “your”) of the DISH Network remote control and is *limited* to the purchase price of the remote control. EchoStar Technologies L.L.C., formerly known as EchoStar Technologies Corporation, and its affiliated companies (“we,” “our,” “us”) warrant this remote control against defects in materials or workmanship as follows.

For one year from the original date of purchase, if we find the remote control is defective subject to the limits of this warranty, we will replace the remote at no charge for parts or labor. We warrant any such work done against defects in materials or workmanship for the remaining part of the original warranty period.

This warranty *does not cover* installation of the DISH Network System; consumer instruction; physical set up or adjustment of any consumer electronic equipment; remote control batteries; signal reception problems; loss of use of the equipment; unused programming charges due to equipment malfunction; cosmetic damage; damage due to lightning, electrical or telephone line surges, fire, flood, or other acts of Nature; accident; misuse; abuse; repair or alteration by other than our factory service; negligence; commercial or institutional use; improper or neglected maintenance; equipment sold AS IS or WITH ALL FAULTS; equipment removal or reinstallation; shipping damage if the equipment was not packed and shipped in the manner we prescribe; nor equipment purchased, serviced, or operated outside the contiguous United States of America.

REPLACEMENT AS PROVIDED UNDER THIS WARRANTY IS YOUR EXCLUSIVE REMEDY. WE SHALL NOT BE HELD LIABLE FOR ANY INCIDENTAL OR CONSEQUENTIAL DAMAGES FOR BREACH OF ANY EXPRESSED OR IMPLIED WARRANTY ON THIS DEVICE, NOR FOR ANY INCIDENTAL OR CONSEQUENTIAL DAMAGE RESULTING FROM THE USE OF, OR INABILITY TO USE, THIS DEVICE. UNDER NO CIRCUMSTANCES SHALL OUR LIABILITY, IF ANY, EXCEED THE PURCHASE PRICE PAID FOR THIS DEVICE. EXCEPT TO THE EXTENT PROHIBITED BY APPLICABLE LAW, ANY IMPLIED WARRANTY OF MERCHANTABILITY OR FITNESS FOR A PARTICULAR PURPOSE ON THIS DEVICE IS LIMITED IN DURATION TO THE DURATION OF THIS WARRANTY. WE RESERVE THE RIGHT TO REFUSE TO HONOR THIS WARRANTY IF WE DETERMINE ANY OF THE ABOVE EXCEPTIONS TO HAVE CAUSED THIS DEVICE NOT TO HAVE PERFORMED PROPERLY. THIS WARRANTY SHALL BE VOID IF ANY FACTORY-APPLIED IDENTIFICATION MARK, INCLUDING BUT NOT LIMITED TO SERIAL OR CONDITIONAL ACCESS NUMBERS, HAS BEEN ALTERED OR REMOVED. THIS WARRANTY SHALL ALSO BE VOID IF THE DEVICE HAS BEEN OPENED BY AN UNAUTHORIZED PERSON (with the exception of opening the battery cover).

This warranty gives you specific legal rights which may vary from state to state. Some states do not allow the exclusion or limitations of incidental or consequential damages, or allow limitations on the duration of an implied warranty, so those limitations may not apply to you.

## DISH NETWORK’S EXCHANGE PROGRAMS

DISH Network offers two options if you need to replace your remote control; the Advanced Exchange Program and the Post Receipt Exchange Program.

### Advance Exchange Program

The Advanced Exchange Program allows you to have a replacement remote shipped immediately to you. Depending upon where you live, the remote should arrive within 3 to 5 business days. You will not have to return your defective remote to DISH Network using this program.

A shipping charge will be applied for shipping the replacement remote. This is a one-time fee based on DISH Network's competitive bulk shipping rates (additional charges may apply outside the continental U.S.). This fee will be charged to your billing account or valid credit card.

### Post Receipt Exchange Program

The Post Receipt Exchange Program does require that you send DISH Network the defective remote control at your cost to determine if the equipment is covered under warranty. To provide faster service, upon receipt of your equipment you will be shipped a replacement. Your original equipment will not be available for return.

If your equipment is not covered under warranty and can be repaired, your billing account or credit card will be charged the standard repair fee for the replacement. If damage to the defective equipment is found, which DISH Network in its sole discretion determines has voided the warranty, or makes the equipment unrepairable, your billing account or credit card will be charged the market price of the replacement.

### ACCESSORY WARRANTY

An accessory is any DISH Network branded equipment, displaying the DISH Network logo, excluding the receiver, Smart Card, cables and hookups, and non-mechanical components. A one-year warranty becomes effective upon the activation of the DISH system or date of purchase, if bought separately. A proof of purchase is required to verify the purchase date. If an accessory has an expired warranty, no exchange will be issued. You may purchase replacement accessories from DISH Network or your local retailer.

## IF YOU NEED HELP

1. Review this *User Guide*.
2. See *Troubleshooting* on page 21.
3. Call the Customer Service Center at 1-800-333-DISH (3474). Have the date of purchase and your customer account number ready.
  - a. If the representative finds you should return the remote control, you'll get a telephone number to call for a Return Authorization (RA) number. *Before shipping* any equipment to us, you *must* get a Return Authorization number.
  - b. You *must* package returned equipment the right way. Follow the instructions the representative gives you.
  - c. Write the RA number in large, clearly visible characters on the *outside* of the shipping box used to return the equipment.  
*To avoid confusion and misunderstandings, we will return shipments without an RA number clearly visible on the outside of the box to you at your cost.*
  - d. We will:
    - Check the remote control, including whether it is covered under the warranty.
    - Replace any remote we find is defective with a new or refurbished remote, if the defective remote is covered under the warranty. We will ship the replacement remote at our expense.
    - If a defective remote is not covered under the warranty, we will tell you. We may assess you a flat rate charge for a replacement remote, including shipping and insurance.



## REGULATORY FACTORS

This device complies with Part 15 of FCC Rules. Operation is subject to the following two conditions:

1. this device may not cause harmful interference, and
2. this device must accept any interference received, including interference that may cause undesired operation.

Changes or modifications to this device may void your authority to operate this equipment.

This equipment has been tested and found to comply with the limits for a Class B digital device, pursuant to Part 15 of the FCC Rules. These limits are designed to provide protection against harmful interference in a residential installation. This equipment generates, uses and can radiate radio frequency energy and, if not installed and used in accordance with the instructions, may cause harmful interference to radio communications. However, there is no guarantee that interference will not occur in a particular installation. If this equipment does cause harmful interference to radio or television reception, which can be determined by turning the equipment off and on, the user is encouraged to try to correct the interference by one or more of the following measures:

- Re-orient or relocate the receiving antenna.
- Increase the separation between the equipment and receiver.
- Connect the equipment into an outlet on a circuit different from that to which the receiver is connected. Consult the dealer or an experienced radio/TV technician for help.



# Reference Tables

Write down your remote address, channel numbers/inputs, TV, VCR, DVD player, and stereo equipment codes as you program them for future reference.



Remote Address

Channel or Input for  
Satellite Programming



If you enter a "1" as the last number of your code, your remote is in Limited Mode (see page 3 for more details).

TV Code

TV

(Optional)

VCR/DVD Player Code

VCR

(Optional)

Auxiliary Equipment Code

AUX

(Optional)

To read out your remote codes, see page 8 for instructions.





**For all your customer needs,  
call the Customer Service Center  
at 1-800-333-DISH(3474)**

**158088**